



# Pallia M&A

## Global Pvt Ltd.

*Delivering Excellence...*

Simplified Logistics, Perfectly Executed - Driven by Excellence in Auto Logistics

# MANAGEMENT TEAM

## **Mr. Mahendar Puri** **Director**



Mr. Mahendar Puri is a seasoned business leader with a wealth of experience in the logistics industry. He has a deep understanding of the challenges and opportunities facing the industry and has a proven track record of success in growing and scaling logistics businesses.

Throughout his career, he has demonstrated a keen ability to identify and capitalize on market trends and has been instrumental in developing and implementing strategic initiatives that drive growth and profitability. He remains committed to leveraging cutting-edge technologies and trends in the industry to drive innovation and provide the best possible service to our customers.

## **Mr. Vipul Nanda** **Director**



Mr. Vipul Nanda is the Founder & MD of Mercurio Pallia Logistics (now Pallia Trans Logistics) with 30+ years of experience in transportation & logistics business. He also served as the President of the “Car Carrier Association (CCA) of India” under which of 15,000 car carrier transport vehicles run.

Additionally, he is the Founder of eee-Taxi which is an end-to-end E- Mobility Solutions Company that provides Electric Taxi Services to top corporates and helps reduce air pollution in the country. He is also involved in Agriculture activities in Pallia (UP).

# MANAGEMENT TEAM

**Mr. Abhishek Poddar**  
**Director**



Mr. Abhishek Poddar is a highly accomplished professional with a strong background in Finance as a Chartered Accountant & has extensive experience in Shipping and Logistics Sector.

Abhishek has dedicated almost two decades of his career to the shipping and logistics industry. He deeply understands the sector's complexities and challenges, enabling him to drive strategic initiatives and deliver exceptional results. Abhishek's financial acumen, industry knowledge, and project management expertise make him a valuable asset in shipping and logistics. His proven track record of delivering results and his ability to lead and inspire teams position him as a dynamic and accomplished professional in the industry.

**Mr. Naman Nanda**  
**Director**



Mr. Naman Nanda, a former student of Suncity World School and the University of British Columbia's Sauder School of Business, is a dynamic individual with a diverse range of talents. As a state-level football player and Cultural Secretary for Dance in school, he showcased his athletic and leadership abilities.

# MANAGEMENT TEAM

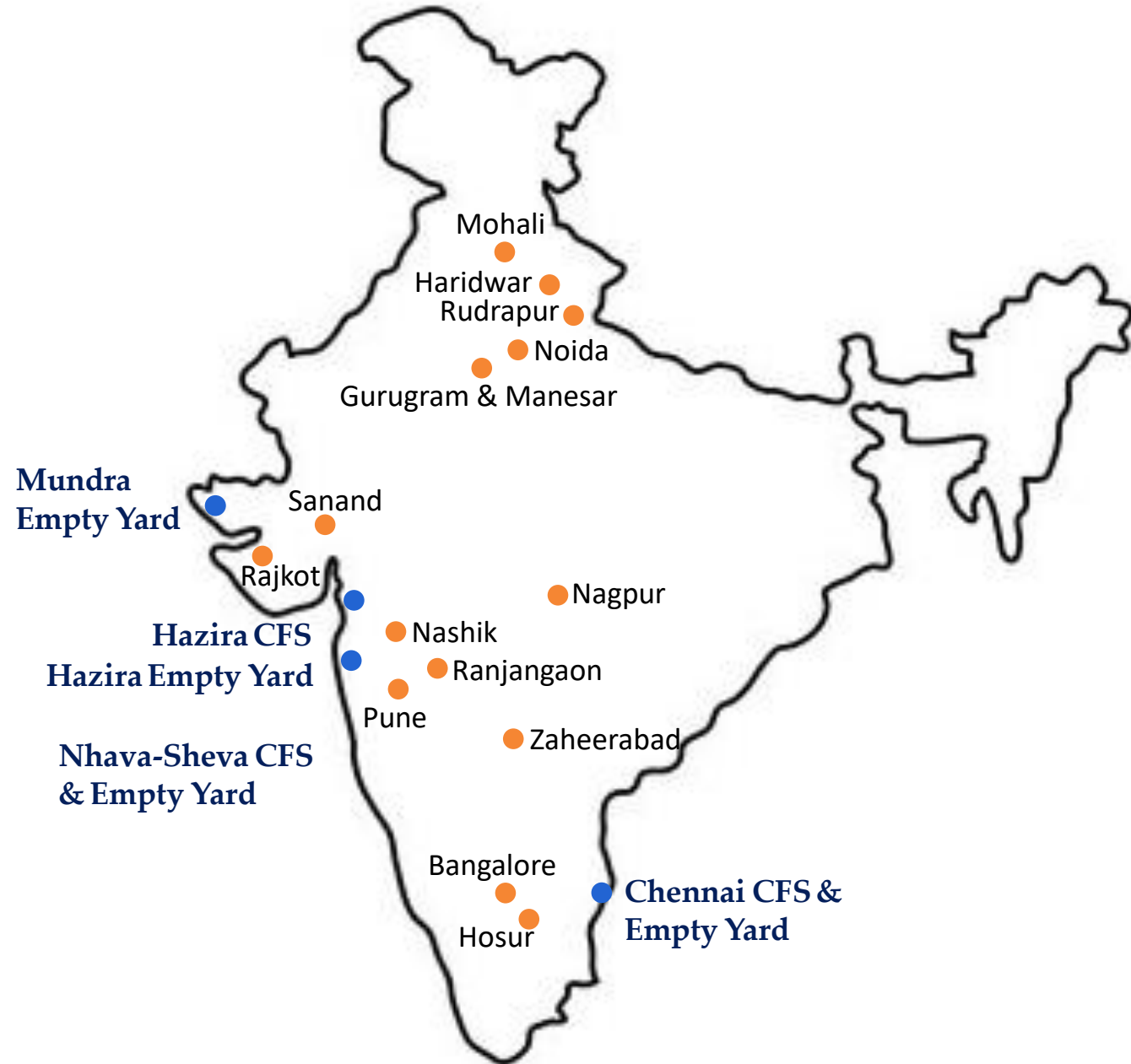
## **Mr. Vinod Srivasstav**



Mr. Vinod Srivasstav is a highly accomplished and distinguished supply chain management and logistics professional, renowned for his extensive expertise in transport management, fleet optimization, logistics operations, supply chain management, procurement, and commercial excellence. With a wealth of experience, he adeptly handles the complexities of intricate export-import logistics, ensuring seamless and efficient operations.

Furthermore, Mr. Srivasstav possesses a profound understanding of end-to-end warehouse and yard management, encompassing the strategic planning, organization, and optimization of storage facilities, inventory control, and distribution processes. His invaluable skillset and comprehensive knowledge make him an exceptional asset to Pallia M&A Global, where his contributions significantly enhance operational efficiency and drive success in the ever-evolving logistics landscape.

# OUR PRESENCE



- MSA Global Logistics Locations
- Pallia Trans Logistics Locations

Simplified Logistics, Perfectly Executed - Driven by Excellence in Auto Logistics

# Container Freight Station(CFS) | Overview

Strategically located CFS facilities with proximity to major ports of India

## Hazira

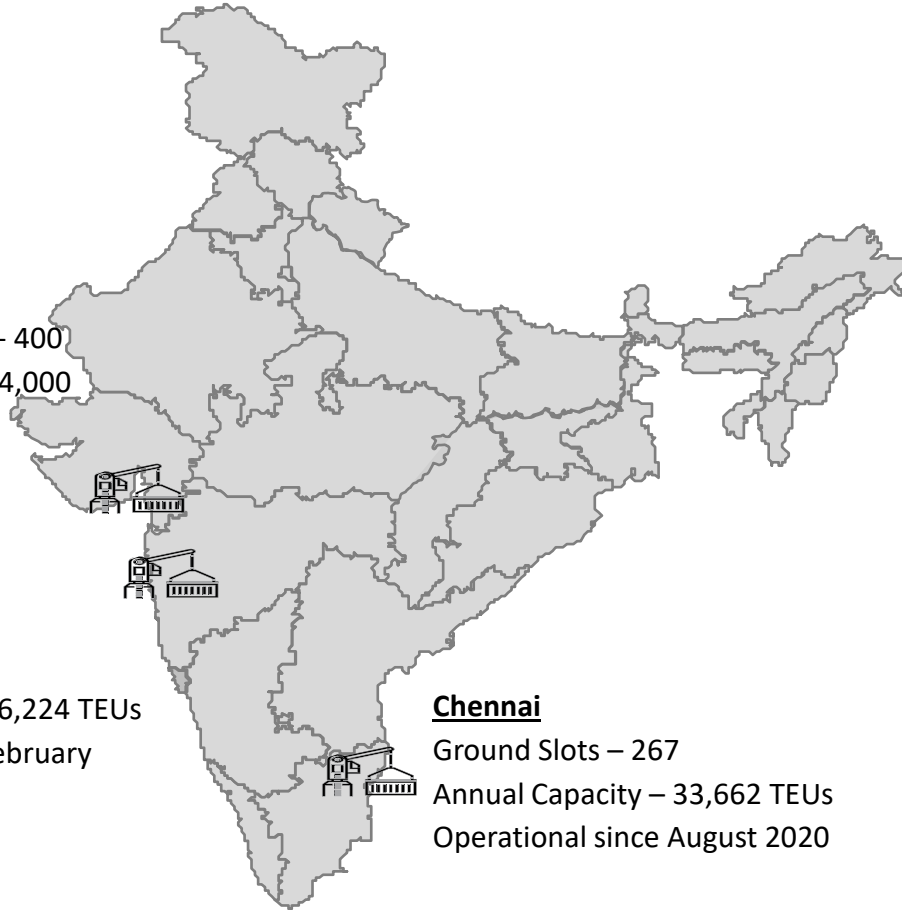
Ground Slots – 350 - 400  
Annual Capacity – 44,000  
TEUs

## Nhava Sheva

Ground Slots - 450  
Annual Capacity – 76,224 TEUs  
Operational since February  
2020.

## Chennai

Ground Slots – 267  
Annual Capacity – 33,662 TEUs  
Operational since August 2020



## Nhava Sheva CFS



## Chennai CFS



## Hazira CFS



# Container Freight Station(CFS) | Services

- **CFS - Service offerings** - movement of EXIM containers from / to Sea port, handling & storage of EXIM containers, Destuffing & Warehousing of cargo which includes deconsolidation of Cargo.
  
- **Current Operations –**
  - ❖ **Nhava Sheva** – Strategic Alliance Management Operator (SAMO) Agreement with Central Warehousing Corporation (CWC) exclusively for 15 Years starting February 2020. The CFS is 10-acre facility at distance of 10 kms from port with Covered Warehouse area of 86000 sq ft & Container Storage yard with Capacity to handle approx. 58000 TEUs annually. Capacity utilization - 120 %.
  
  - ❖ **Chennai** – 30 years exclusive agreement with Supply Chain Logistics Pvt Ltd (SCL) since August 2020 - 10 acre facility at distance of 7 kms from Adani Kattupali Port - currently with Covered Warehouse area of 30000 sq ft & 24000 TEUs annual Capacity on 6 acres. Balance 4 acres will be developed.
  
  - ❖ **Hazira (50: 50 JV)** - 30 years exclusive agreement on Built Operate Transfer Model. A 5.09 acre facility at distance of 12 kms from Hazira Adani Port - currently with Covered Warehouse area of 30000 sq ft & 24000 TEUs annual Capacity on 5.09 acres.
  
- **Proposed Expansion –**
  - ❖ **Mundra** – Planning to start CFS operations at Mundra.

# Empty Container Yard | Overview

CFS operations are ably supported by Pan India Network of Empty Container Yard facilities to provide end to end service to shipping lines

## Mundra

Annual Capacity –  
42,000 TEUs

## Hazira

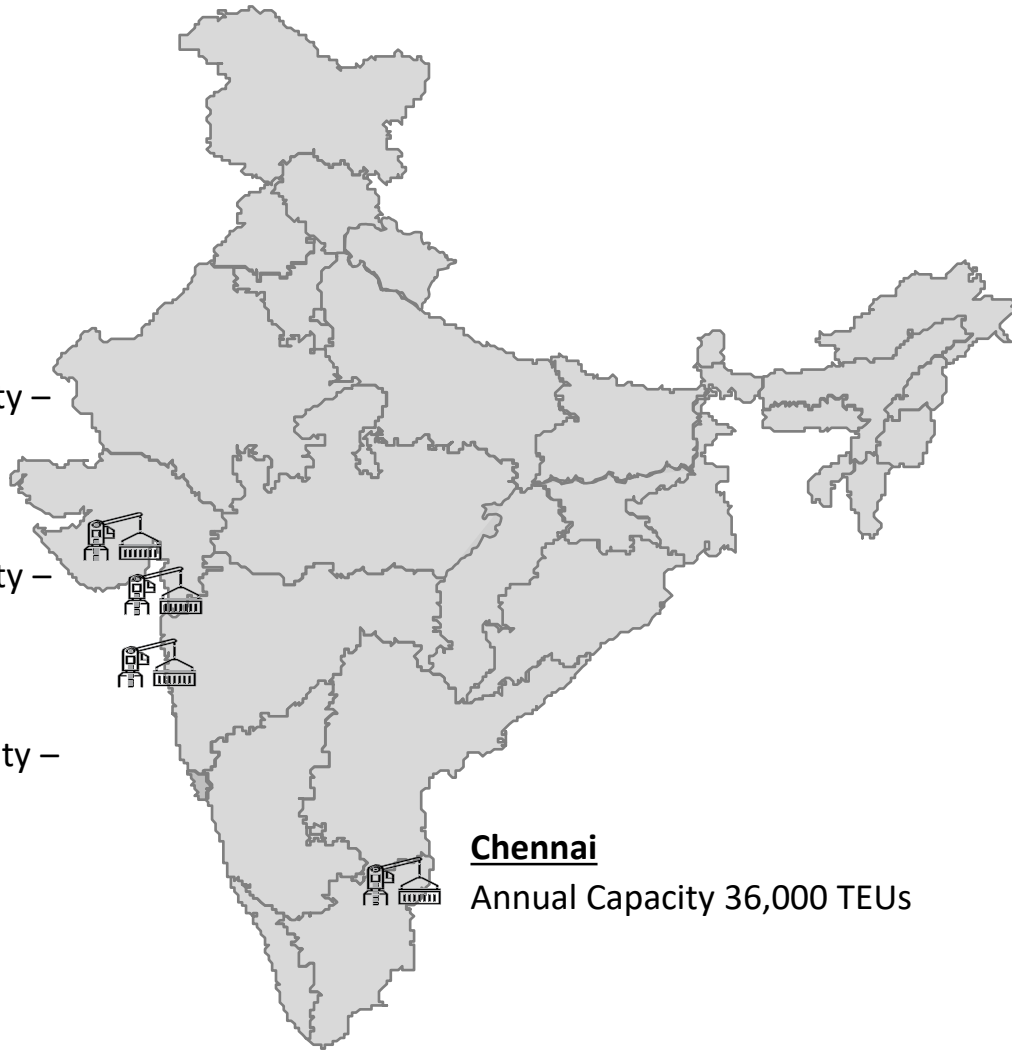
Annual Capacity –  
12,000 TEUs

## Nhava Sheva

Annual Capacity –  
84,200 TEUs

## Chennai

Annual Capacity 36,000 TEUs





# Empty Container Yard | Services

- Empty Containers of Shipping Lines are being handled, stored, repaired, washed & cleaned to reposition to port or Shipper.
  
- Current Operations –
  - ❖ **Nhava Sheva** – The Company has been operating 4 Depots in Nhava sheva admeasuring approx 25 acres leasehold property in Total. The facilities are at distance of approx. 11 kms from the port
  
  - ❖ **Chennai** – The Company is Operating a Depot on revenue sharing arrangement at a Depot in Chennai on land parcel of 7 acres. Distance from both port - 18 kms
  
  - ❖ **Mundra** – The Company is Operating a Depot on revenue sharing arrangement at a Depot in Mundra on land parcel of 7 acres. Distance from both port - 12 kms
  
  - ❖ **Hazira** - The Company is Operating a Depot on revenue sharing arrangement at a Depot in Hazira on land parcel of 5 acres. Distance from both port - 16 kms
  
- **Expansion Plans -**
  - ❖ Similar facilities at Tuticorin & Vizag

# Freight Forwarding | Overview

- Our Clearing and Freight Forwarding services spell ease, flexibility and professionalism. A robust process and service model ensure continuous information exchange between our international and local associates. The Company is also registered with AMTOI, FFFAI, MTO, and FMC.
- We guarantee the best standards in customer service with cost effectiveness and time bound deliveries. Our door-to-door services for all C&F assignments add to overall customer satisfaction.
- Our long-term service contracts with many shipping lines/ NVOCCs and Customs House Agents ensure confirm shipments on pre-confirmed dates and at reduce cost.
- We provide-
  - ❖ Complete documentation and customs house agency services under one roof
  - ❖ Warehousing and distribution throughout India
  - ❖ Expedited delivery services
  - ❖ Total cargo monitoring with complete vessel detail
  - ❖ DDU and DDP processing Worldwide network of agents servicing every major seaport

# Auto Logistics | Overview

- MSA forms Joint Venture (JV) with Pallia Trans Logistics Private Limited to establish "Pallia M&A Global Private Limited."
- Pallia Trans Logistics, with more than 30 years of experience, has served numerous car OEMs in India and owns and operates a diverse fleet of over 400 vehicles, comprising CMVR Compliant car carriers, rigid trucks, and truck-on-truck carriers
- Pallia Trans Logistics has a presence throughout India, with offices in 13 locations across the country. They also manage car stockyards and warehouses.
- JV Company, Pallia M&A Global, engages in discussions with Indian OEMs for logistic services in both Inbound and Outbound cargo.
- The JVC plans to establish car parking yards in India and internationally, catering to the distribution needs of OEMs.
- Pallia M&A Global intends to create Pre-dispatch Inspection (PDI) centres in various locations across India.



# Auto Logistics | Overview

- Successfully handling Kia Motors' logistics through a Korean Freight Forwarding Company, covering shipments from Chennai to Indonesia.
- Comprehensive services provided, encompassing Ocean Freight, CFS services, and the meticulous lashing and choking of cars inside containers.
- Ongoing business collaboration with Kia Motors for routes from Chennai to Jakarta, with discussions underway for expansion to additional routes such as Cambodia and Russia.
- Exploring potential partnerships with other OEMs, notably in talks with French OEM for managing car shipments from Europe to South Korea and from India to Japan.
- Future plans include establishing car parking yards and Pre-Dispatch Inspection (PDI) centers strategically placed across India to cater to various OEMs.



# Auto Logistics | Stockyard Management Pune

"Efficiently managed, expertly handled, stockyard management solutions for your peace of mind."

## ➤ Stockyard Expertise

- ❖ Proven Stockyard Management: Successfully managing a 2,500-car capacity stockyard since March 2013.
- ❖ Managing compound of 13-acre land paved with all essential facilities for stockyard services.

## ➤ Efficient Inventory Management

- ❖ Optimized Stockyard Operations: Streamline invoicing, distribution, and CBU inventory planning for time-efficient results.
- ❖ One-Stop Services: Services under a single roof, including:
  - Distribution
  - Quality management (LTSM, PDI, washing)
  - Value-added services - Maintenance, Repairs & paint rectification.



Parking Area



PDI Shed

# Auto Logistics | Stockyard Management Pune

“Efficiently managed, expertly handled, stockyard management solutions for your peace of mind.”

## ➤ Financial Precision

- ❖ Vehicle Invoicing: Maintain precise financial control through expert vehicle invoicing.
- ❖ Simplified Communication: Single Point of Contact (SPOC): Ensure smooth information flow and activity coordination with customers, reducing the risk of delays.

## ➤ Security and Safety

- ❖ Gated Compound: Assets secured within our gated compound.
- ❖ 24/7 Security and CCTV: Maintain round-the-clock surveillance and security for added peace of mind.



Workshop



Paint Rectification

# Auto Logistics | Services



OEM Stockyard  
Management



Pre-Dispatch  
Centres



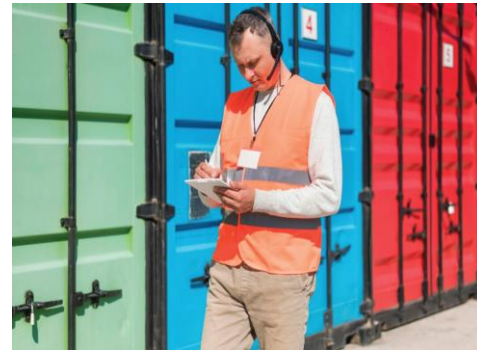
Vehicle Distribution  
Centre Management



Dispatch to  
Dealers



Rail Transport



Custom Clearance



Freight  
Forwarding



Import of Steel  
Coils

# MG Import Shipments – China to Bhutan

- Import shipment from China to Bhutan via Kolkata
- Movement Process
  - ❖ Container arrival at Chennai CFS
  - ❖ Destuffing containers
  - ❖ Loading onto India origin car carrier trucks
  - ❖ Movement to Kolkata Bhutan Border
  - ❖ Unload from India origin car carrier trucks
  - ❖ Load onto Bhutan origin car carrier trucks
  - ❖ Border clearance
  - ❖ Movement to Bhutan consignee





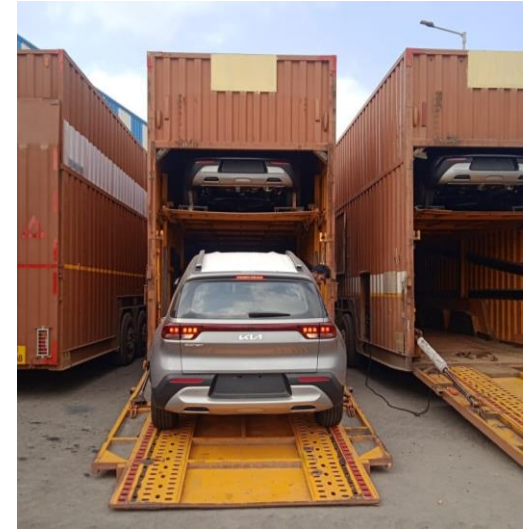
# Auto Logistics | Delighted Customers



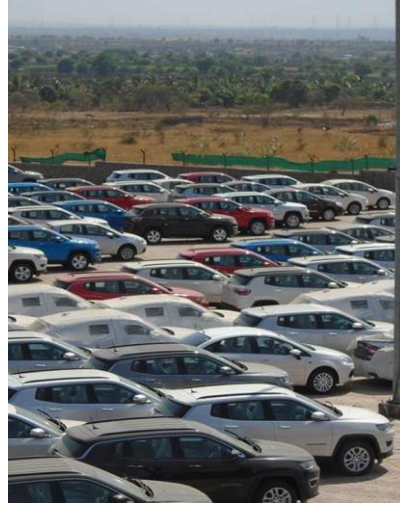
**ASHOK LEYLAND**



# Auto Logistics | Delighted Customers



# Auto Logistics | Photo Gallery





Simplified Logistics, Perfectly Executed - Driven by Excellence in Auto Logistics